



RENÉ OF PARIS®

2014 HI-FASHION
COLLECTION



*Sure my life isn't perfect,
but my **hair** is.*

New Styles Shown (left to right): Winter 2368 in Creamy Toffee-R,
Jordin 2352 in Marble Brown, Jamie 2348 in Auburn Sugar.

BACK *by* POPUP

Gorgeous hair is the
best revenge. - IVANA TRUMP



RENÉ OF PARIS®

ILAR DEMAND



INDEX

SHOWN:
Laine 2317
in Coffee Latte

RENÉ OF PARIS®

AVAILABLE COLORS 6-7
WIGS 8-34 • HALOS 30-31
TOP PIECES 32-34 • ACCESSORIES 47



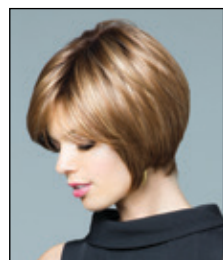
8 JAMIE 2348



9 JORDIN 2352



10 WINTER 2368



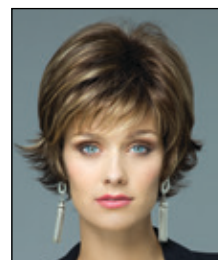
11 AUDREY 2350



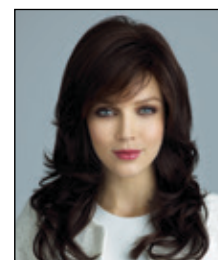
12 BAILEY 2346



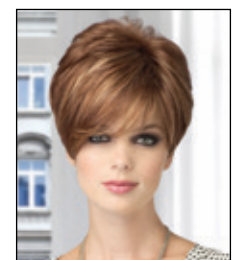
13 CAMERON 2362



14 COCO 2318



15 FELICITY 2353



16 GIA 2359



17 JADE 2313



18 JOEY 2325



19 KOURTNEY 2367



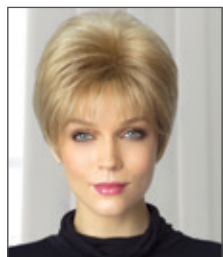
20 LAINE 2317



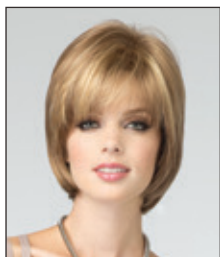
21 LIZZY 2347



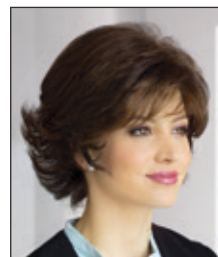
22 MISHA 2363



23 SAMMY 2340



24 SHANNON 2342



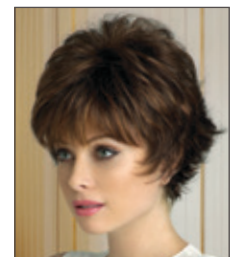
25 SIERRA 2328



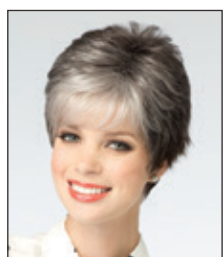
26 TONI 2366



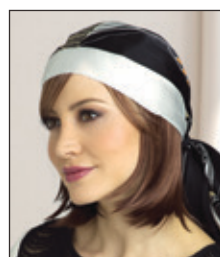
27 TORI 2356



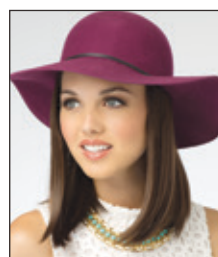
28 TYLER 2341



29 ZOE 2349



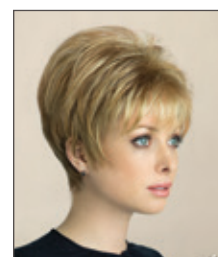
30 HALO BOB 736



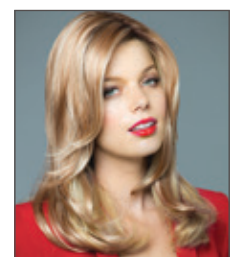
31 ROP HALO 733



32 MEDIUM TP 731



33 NEW ADDITION 770



34 LONG TP 732



A true test of color
commitment!

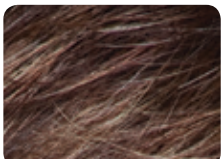
Who says you're not a
beach blond, brilliant
brunette or sleek silver?

Let your imagination
run wild as René of Paris
offers its amazing array
of Airbrush Color, Hybrant
Shades and Hybrant
Silver tones. With so
many rich and radiant
options...there is no limit
to the possibilities...

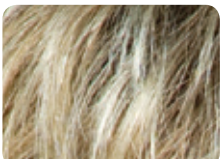
SHOWN:
Felicity 2353
in Ginger Brown

COLORS

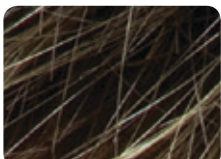
NEW HYBRANT ROOT COLORS



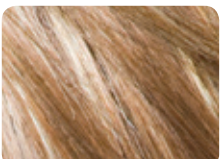
Auburn Sugar-R



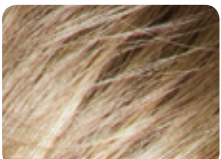
Creamy Toffee-R



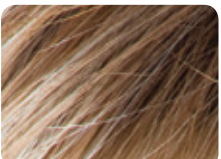
Iced Mocha-R



Maple Sugar-R



Mochaccino-R



Nutmeg-R



SPECIAL ORDERS

If you don't see a style or color you are interested in, contact your AHG sales representative to accommodate you with a "special order." Certain rules may apply.

SILVER COLORS



NEW

A wispy chin
length tousled
layered look,

JAMIE 2348

Fringe: 4.5" (11.5cm). Crown: 6.5" (16.5cm). Nape: 4.5" (11.5cm). Weight: 2.6oz (75g).

Color Shown: Auburn Sugar.

Available Colors: Apricot Frost, Auburn Sugar, Cappuccino, Chestnut, Coffee Latte, Copper Glaze, Creamy Blond, Creamy Toffee, Dark Chocolate, Espresso, Ginger Brown, Iced Mocha, Maple Sugar, Marble Brown, Mochaccino, Spring Honey, Strawberry Swirl, Toasted Brown, Vanilla Lush.

NEW

A razor-textured
cut in this
trendy shag.

JORDIN 2352

Fringe: 5.0" (12.7cm). Crown: 6.5" (16.5cm). Nape: 7.0" (17.8cm). Weight: 3.2oz (90g).

Color Shown: Marble Brown.

Available Colors: Auburn Sugar, Cappuccino, Coffee Latte, Copper Glaze, Creamy Toffee, Dark Chocolate, Espresso, Ginger Brown, Ginger-H, Iced Mocha, Maple Sugar, Marble Brown, Mochaccino, Red Pepper, Spring Honey, Strawberry Swirl, Toasted Brown, Vanilla Lush.

NEW

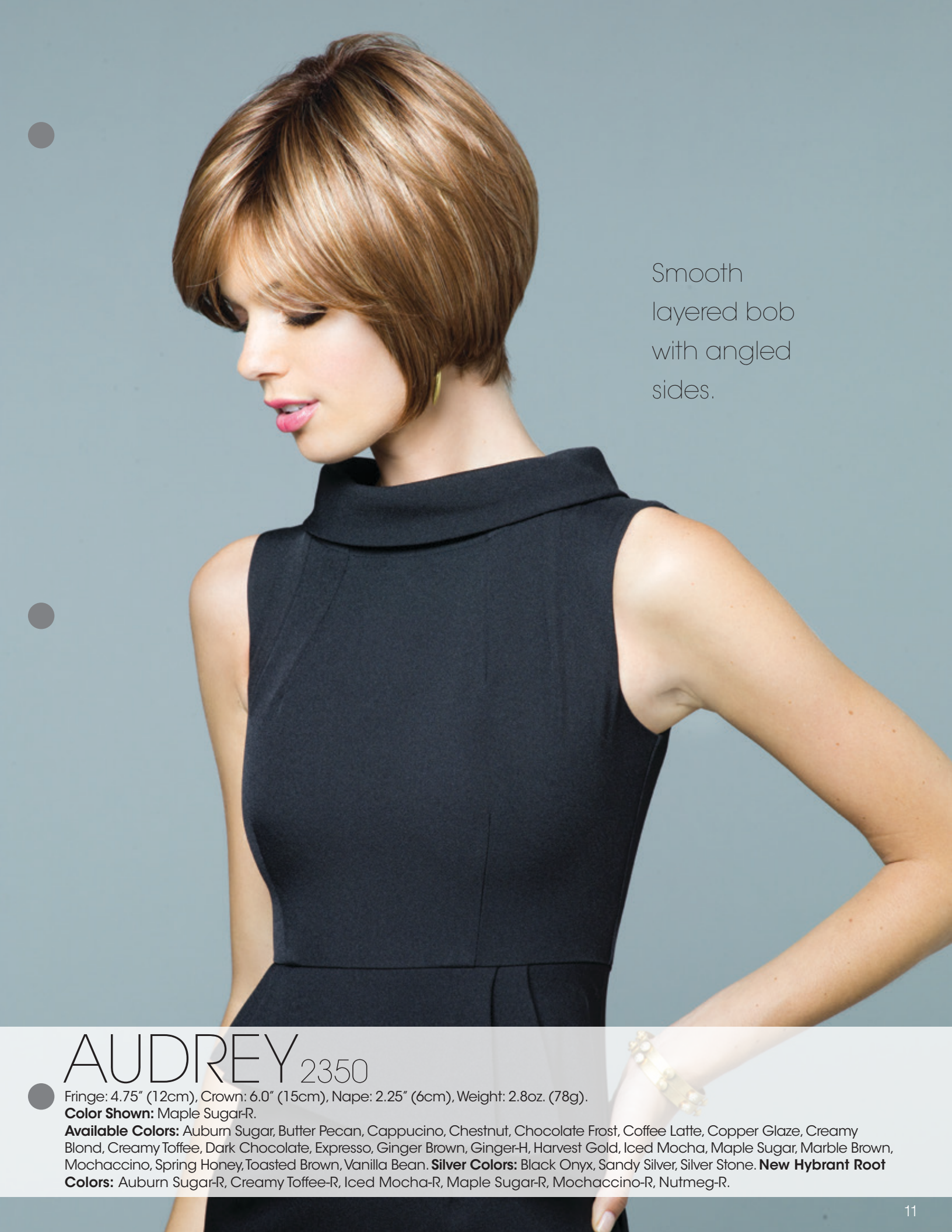
Short sophisticated wispy layers that are face flattering and modern.

WINTER 2368

Fringe: 3.5" (9cm). Crown: 4.7" (12cm). Sides: 3.7" (9.5cm). Nape: 2.9" (7.5cm). Weight: 2.4-2.5oz. (67-72g).

Color Shown: Coffee Latte.

Available Colors: Auburn Sugar, Chestnut, Coffee Latte, Copper Glaze, Creamy Blond, Ginger Brown, Ginger-H, Harvest Gold, Iced Mocha, Maple Sugar, Marble Brown, Mochaccino, Razberry Ice, Spring Honey, Strawberry Swirl, Toasted Brown. **Silver Colors:** Silver Mink, Silver Stone. **New Hybrant Root Colors:** Auburn Sugar-R, Creamy Toffee-R, Iced Mocha-R, Maple Sugar-R, Mochaccino-R, Nutmeg-R.



Smooth
layered bob
with angled
sides.

AUDREY²³⁵⁰

Fringe: 4.75" (12cm), Crown: 6.0" (15cm), Nape: 2.25" (6cm), Weight: 2.8oz. (78g).

Color Shown: Maple Sugar-R.

Available Colors: Auburn Sugar, Butter Pecan, Cappuccino, Chestnut, Chocolate Frost, Coffee Latte, Copper Glaze, Creamy Blond, Creamy Toffee, Dark Chocolate, Espresso, Ginger Brown, Ginger-H, Harvest Gold, Iced Mocha, Maple Sugar, Marble Brown, Mochaccino, Spring Honey, Toasted Brown, Vanilla Bean. **Silver Colors:** Black Onyx, Sandy Silver, Silver Stone. **New Hybrant Root Colors:** Auburn Sugar-R, Creamy Toffee-R, Iced Mocha-R, Maple Sugar-R, Mochaccino-R, Nutmeg-R.




Easy flowing
layers define this
trendy look.

BAILEY 2346

Fringe: 3.5" (9cm). Crown: 6.5" (16.5cm). Nape: 6.5" (16.5cm). Weight: 3.1 oz. (90g).

Color Shown: Mochaccino-R.

Available Colors: Apricot Frost, Auburn Sugar, Butter Pecan, Cappuccino, Chestnut, Coffee Latte, Copper Glaze, Creamy Blond, Creamy Toffee, Dark Chocolate, Espresso, Ginger Brown, Ginger-H, Harvest Gold, Iced Mocha, Irish Spice, Maple Sugar, Marble Brown, Mochaccino, Red Pepper, Spring Honey, Strawberry Swirl, Toasted Brown, Vanilla Lush. **New Hybrant Root Colors:** Auburn Sugar-R, Creamy Toffee-R, Iced Mocha-R, Maple Sugar-R, Mochaccino-R, Nutmeg-R.



Casual
movement
characterizes
this irresistible
bob.

CAMERON 2362

Fringe: 5.0" (13cm), Crown: 6.5" (16.5cm), Nape: 4.0" (10cm), Weight: 3.1oz. (88g).

Color Shown: Nutmeg-R.

Available Colors: Almond Rocka, Auburn Sugar, Butter Pecan, Cayenne Spice, Cappuccino, Chai Cream, Chestnut, Chocolate Frost, Coconut Spice, Coffee Latte, Copper Glaze, Creamy Blond, Creamy Toffee, Dark Chocolate, Espresso, Ginger Brown, Honey Wheat, Iced Mocha, Java Frost, Maple Sugar, Marble Brown, Mochaccino, Raspberry Ice, Spring Honey, Sugar Cane, Toasted Brown. **New Hybrant Root Colors:** Auburn Sugar-R, Creamy Toffee-R, Iced Mocha-R, Maple Sugar-R, Mochaccino-R, Nutmeg-R.



A carefree
style with
charming
texture.

COCO 2318

Fringe: 4.0" (10cm), Crown: 5.0" (12.5cm), Nape: 2.0" (5cm), Weight: 2.5oz. (70g).

Color Shown: Iced Mocha-R.

Available Colors: Auburn Sugar, Caramel Cream, Chestnut, Coffee Latte, Copper Glaze, Creamy Blond, Creamy Toffee, Dark Chocolate, Frosti Blond, Ginger Brown, Harvest Gold, Iced Mocha, Maple Sugar, Marble Brown, Mochaccino, Spring Honey, Vanilla Bean, Vanilla Lush. **Silver Colors:** Silver Stone. **New Hybrant Root Colors:** Auburn Sugar-R, Creamy Toffee-R, Iced Mocha-R, Maple Sugar-R, Mochaccino-R, Nutmeg-R.



A luxurious
look with
textured
flicked tips.

FELICITY 2353

Fringe: 5.25" (13.5cm). Crown: 10" (25.5cm). Nape: 14" (35.25cm). Weight: 4.0oz. (114g).

Color Shown: Ginger Brown.

Available Colors: Auburn Sugar, Cappuccino, Chestnut, Coffee Latte, Copper Glaze, Creamy Toffee, Dark Chocolate, Espresso, Ginger Brown, Ginger-H, Iced Mocha, Irish Spice, Maple Sugar, Marble Brown, Mochaccino, Razberry Ice, Spring Honey, Strawberry Swirl, Toasted Brown, Vanilla Lush.



A chic tapered look with effortless elegance.

GIA 2359

Fringe: 6.0" (15cm). Crown: 3.25" (8.5cm). Nape: 2.0" (5cm). Weight: 2.0oz. (58g).

Color Shown: Coconut Spice.

Available Colors: Almond Rocka, Auburn Sugar, Cayenne Spice, Chai Cream, Chestnut, Chocolate Frost, Coconut Spice, Coffee Latte, Copper Glaze, Creamy Blond, Creamy Toffee, Dark Chocolate, Ginger Brown, Harvest Gold, Honey Wheat, Iced Mocha, Java Frost, Maple Sugar, Marble Brown, Mochaccino, Raspberry Ice, Spring Honey, Sugar Cane, Toasted Brown. **Silver Colors:** Sandy Silver, Silver Stone.




Feathery out-flipped layers lend a “retro” finish to this shoulder length cut.

JADE 2313

Fringe: 5.5" (14cm). Crown: 8.0" (20.5cm). Nape: 9.0" (23cm). Weight: 3.8oz. (107g).

Color Shown: Caramel Cream.

Available Colors: Apricot Frost, Auburn Sugar, Burgundy Rosa, Caramel Cream, Chestnut, Coffee Latte, Creamy Blond, Creamy Toffee, Dark Chocolate, Espresso, Ginger Brown, Harvest Gold, Iced Mocha, Maple Sugar, Marble Brown, Mochaccino, Spring Honey, Vanilla Bean, Vanilla Lush.



A free-spirited mix of textured curls that can be tamed or tousled.


JOEY 2325

Fringe: 3.75" (9.5cm). Crown: 4.0" (10cm). Nape: 3.25" (8cm). Weight: 2.0oz. (56g).

Color Shown: Silver Stone.

Available Colors: Copper Glaze, Creamy Toffee, Dark Chocolate, Frosti Blond, Ginger Brown, Harvest Gold, Maple Sugar, Marble Brown, Spring Honey, Strawberry Swirl, Toasted Brown. **Silver Colors:** Silver Stone.

Aero-Light®
Cap




Retro-like layers
create femininity
and infinite style
versatility.

KOURTNEY 2367

Fringe: 5.25" (13.5cm). Crown: 9.0" (23cm). Nape: 7.75" (19.5cm). Weight: 3.4oz. (97g).

Color Shown: Coffee Latte.

Available Colors: Auburn Sugar, Cappuccino, Chestnut, Coconut Spice, Coffee Latte, Copper Glaze, Creamy Blond, Creamy Toffee, Dark Chocolate, Espresso, Garnet Glaze, Ginger Brown, Honey Wheat, Iced Mocha, Java Frost, Maple Sugar, Marble Brown, Mochaccino, Spring Honey, Sugar Cane, Toasted Brown.




Soft layers with
razored edges
represent
an irresistibly
feminine design.

LAINE 2317

Fringe: 9.0" (23cm). Crown: 14" (35.5cm). Nape: 9.0" (23cm). Weight: 4.9oz. (139g).

Color Shown: Coffee Latte.

Available Colors: Cappuccino, Chestnut, Coffee Latte, Creamy Blond, Creamy Toffee, Espresso, Ginger Brown, Maple Sugar, Marble Brown, Mochaccino, Spring Honey.



Short and saucy
with razor finished
layers. Just spike it
up and go!

LIZZY 2347

Fringe: 3.5" (9cm), Crown: 3.5" (9cm), Nape: 2.0" (5cm), Weight: 2.0oz. (55g).

Color Shown: Creamy Toffee-R.

Available Colors: Apricot Frost, Auburn Sugar, Burgundy Rosa, Cappuccino, Chestnut, Coffee Latte, Copper Glaze, Creamy Blond, Dark Chocolate, Espresso, Ginger Brown, Ginger-H, Gold Blond, Harvest Gold, Iced Mocha, Maple Sugar, Marble Brown, Mochaccino, Raspberry Ice, Spring Honey, Strawberry Swirl, Toasted Brown, Vanilla Bean, Vanilla Lush. **Silver Colors:** Silver Stone. **New Hybrant Root Colors:** Auburn Sugar-R, Creamy Toffee-R, Iced Mocha-R, Maple Sugar-R, Mochaccino-R, Nutmeg-R.




Long tresses
with fringe
are both
timeless and
up-to-date.

MISHA 2363

Fringe: 4.25" (11cm). Crown: 9.75" (25cm). Nape: 11.5" (29.5cm). Weight: 5.1oz. (144g).

Color Shown: Garnet Glaze.

Available Colors: Almond Rocka, Cappucino, Chai Cream, Chestnut, Coconut Spice, Coffee Latte, Creamy Blond, Creamy Toffee, Dark Chocolate, Espresso, Garnet Glaze, Ginger Brown, Java Frost, Maple Sugar, Mochaccino, Spring Honey.



A spiky, short
cut with
tapered nape
and sides.

SAMY 2340

Fringe: 4.0" (10cm). Crown: 4.0" (10cm). Nape: 2.0" (5cm). Weight: 1.9oz. (54g).

Color Shown: Vanilla Bean.

Available Colors: Coffee Latte, Copper Glaze, Creamy Toffee, Dark Chocolate, Frosti Blond, Ginger Brown, Iced Mocha, Maple Sugar, Marble Brown, Mochaccino, Spring Honey, Toasted Brown, Vanilla Bean.

Silver Colors: Sandy Silver, Silver Stone, 60.



A structured chin length bob with tapered ends.

SHANNON 2342

Fringe: 4.5" (11.5cm). Crown: 7.5" (19cm). Nape: 4.0" (10cm). Weight: 3.0oz. (85g).

Color Shown: Mochaccino.

Available Colors: Cappuccino, Coffee Latte, Creamy Blond, Creamy Toffee, Dark Chocolate, Espresso, Ginger Brown, Ginger-H, Harvest Gold, Light Chocolate, Maple Sugar, Marble Brown, Mochaccino, Raspberry Ice, Spring Honey, Strawberry Swirl, Toasted Brown.



A buoyant
arrangement of
tousled texture
and body.

SIERRA 2328

Fringe: 5.0" (12.5cm). Crown: 3.5" (9cm). Nape: 3.5" (9cm). Weight: 2.1oz. (59g).

Color Shown: Toasted Brown.

Available Colors: Auburn Sugar, Chestnut, Coffee Latte, Creamy Toffee, Dark Chocolate, Espresso, Frosti Blond, Ginger Brown, Harvest Gold, Iced Mocha, Marble Brown, Mochaccino, Spring Honey, Strawberry Swirl, Toasted Brown.

Aero-Light®
Cap



Rounded blunt-cut fringe and face framing layers combine to craft a modern classic.

TONI 2366

Fringe: 3.5" (9cm). Crown: 8.8" (22.5cm). Nape: 4.75" (12cm). Weight: 4.2oz. (118g).

Color Shown: Almond Rocka.

Available Colors: Almond Rocka, Auburn Sugar, Cappuccino, Cayenne Spice, Chestnut, Coconut Spice, Coffee Latte, Copper Glaze, Creamy Blond, Creamy Toffee, Dark Chocolate, Ginger Brown, Java Frost, Maple Sugar, Marble Brown, Mochaccino, Spring Honey, Sugar Cane, Toasted Brown.



A striking
angled bob
with blunt
fringe.

TORI 2356

Fringe: 4.0" (10cm). Crown: 7.0" (17.5cm). Nape: 2.0" (5cm). Weight: 2.9oz. (82g).

Color Shown: Auburn Sugar-R.

Available Colors: Apricot Frost, Auburn Sugar, Black, Butter Pecan, Cappuccino, Chestnut, Chocolate Frost, Coffee Latte, Copper Glaze, Creamy Blond, Creamy Toffee, Dark Chocolate, Espresso, Ginger Brown, Ginger-H, Harvest Gold, Iced Mocha, Irish Spice, Maple Sugar, Marble Brown, Mochaccino, Raspberry Ice, Spring Honey, Strawberry Swirl, Toasted Brown, Vanilla Lush. **New Hybrant Root Colors:** Auburn Sugar-R, Creamy Toffee-R, Iced Mocha-R, Maple Sugar-R, Mochaccino-R, Nutmeg-R.



Chipped layers
and flipped
ends combine
to create this
sophisticated
style.

TYLER 2341

Fringe: 3.5" (9cm). Crown: 3.5" (9cm). Nape: 2.25" (5.5cm). Weight: 1.8oz. (52g).

Color Shown: Ginger-H.

Available Colors: Auburn Sugar, Coffee Latte, Copper Glaze, Creamy Blond, Creamy Toffee, Dark Chocolate, Ginger Brown, Ginger-H, Harvest Gold, Iced Mocha, Marble Brown, Maple Sugar, Mochaccino, Spring Honey, Strawberry Swirl, Toasted Brown. **Silver Colors:** Silver Stone, 60

Aero-Light®
Cap



A modern
pixie with
flicked layers.

ZOE 2349

Fringe: 3.5" (9cm). Crown: 3.25" (8.5cm). Nape: 2.0" (5cm). Weight: 1.7oz. (46g).

Color Shown: Midnite Pearl.

Available Colors: Apricot Frost, Auburn Sugar, Chestnut, Coffee Latte, Copper Glaze, Creamy Blond, Dark Chocolate, Ginger Brown, Ginger-H, Harvest Gold, Iced Mocha, Maple Sugar, Marble Brown, Mochaccino, Spring Honey, Strawberry Swirl, Toasted Brown, Midnite Pearl. **Silver Colors:** Sandy Silver, Silver Stone, 60.

HALO

A refreshingly original halo hair piece complete with chin length layers and a detachable fringe.



HALO BOB 736

Overall: 10" (24.4cm). Weight: 2.9oz (82g). *Detachable Bangs. *Scarf Not Included.

Color Shown: Coconut Spice.

Available Colors: Cappuccino, Coconut Spice, Coffee Latte, Creamy Blond, Creamy Toffee, Dark Chocolate, Garnet Glaze, Ginger Brown, Maple Sugar, Marble Brown, Mochaccino, Spring Honey, Toasted Brown.



A comfy and stylish Halo with detachable fringe. Can be worn under a hat or scarf to complement any outfit!

ROP HALO 733

Overall: 14" (35.5cm). Weight: 2.9oz (82g). *Hat Not Included.

Color Shown (Main): Ginger Brown. **Color Shown (Inset):** Spring Honey. *Scarf Not Included.

Available Colors: Cappucino, Creamy Toffee, Dark Chocolate, Ginger Brown, Harvest Gold, Maple Sugar, Marble Brown, Mochaccino, Spring Honey, Toasted Brown.



TOP PIECE



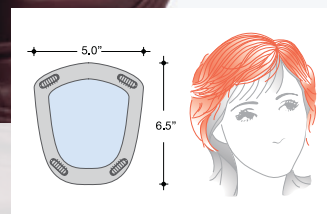
An enhancer that provides extra volume and fullness.

MEDIUM TP 731

Hair Length: 8.0" (20.5cm). Weight: 1.6oz. (45g).

Color Shown: Spring Honey.

Available Colors: Cappucino, Dark Chocolate, Espresso, Ginger Brown, Gold Blond, Harvest Gold, Medium Brown, Spring Honey. **Silver Colors:** Silver Stone. **New Hybrant Root Colors:** Creamy Toffee-R, Iced Mocha-R, Maple Sugar-R, Nutmeg-R, Almond Spice-R, Coffee Latte-R.



TOP PIECE

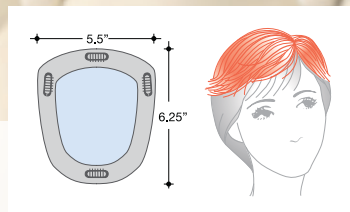
A great enhancer designed to provide extra volume or a fresh look.

NEW ADDITION 770

Hair Length: 4.0" (10cm). Crown: 4.5" (11.5cm). Weight: 1.0oz. (28g).

Color Shown: Spring Honey.

Available Colors: Dark Chocolate, Espresso, Ginger Brown, Gold Blond, Harvest Gold, Light Chocolate, Marble Brown, Medium Brown, Spring Honey. **Silver Colors:** Silver Stone, 60.



TOP PIECE

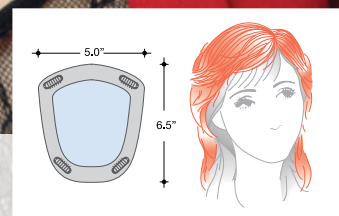
Boost your
beauty with
this versatile
enhancer!

LONG TP 732

Hair Length: 18" (45.5cm). Weight: 2.5oz. (70g).

Color Shown: Nutmeg-R.

Available Colors: Dark Chocolate, Espresso, Ginger Brown, Gold Blond, Harvest Gold, Medium Brown, Spring Honey. **New Hybrant Root Colors:** Creamy Toffee-R, Iced Mocha-R, Maple Sugar-R, Nutmeg-R, Almond Spice-R, Coffee Latte-R.



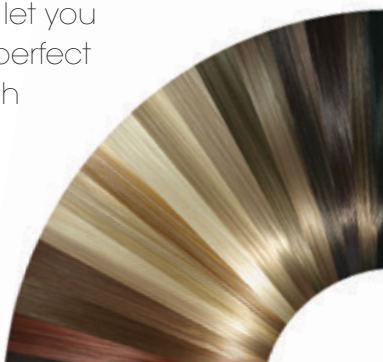
ACCESSORIES

SWATCHES

The color swatches let you see your perfect hair match

9511

Natural Air
Brush
Color Ring



WIG STAND PACKAGE

Convenient "snap together" stand for wig storage or service.

9582

Wig Stand Package
(3pc package contains colors: Black, Blue & Gray)

2103487
Black Wig Stand

2103489
Gray Wig Stand

2103488
Blue Wig Stand



WET GOODS

9950

ROP Shampoo
8oz.

9951

ROP Revive Liquid
Enhancement
8oz.

9952

ROP Holding Spray
8oz.



WIG CAP



9580
Wig Cap

WIG LINER



9581
Wig Liner - Open Mesh

We are delighted that you have chosen to become one of our valued customers. We appreciate your business as well as any inquiries regarding the following:

FIRST ORDER MINIMUM: When you place your first order with AHG, there is a minimum purchase requirement, which will be explained by your sales representative.

PAYMENT TERMS: AHG Accepts payment by Visa, MasterCard, AMEX, Discover, money order, wire transfer and COD. Upon approval, credit terms are available to licensed businesses.

CREDIT PURCHASES: If you wish to apply for an AHG 30-day open account (NET-30), contact your sales representative and request a credit application.

SHIPPING/HANDLING: AHG offers shipping via UPS next day air, 2-3 day air, and ground. Please specify how you would like to ship your merchandise when placing an order. There is a handling charge of \$1.00 for all orders.

LOST/DAMAGED MERCHANDISE: Contact your sales representative for more information.

INTERNET ADVERTISING POLICY: AHG has specific policies for internet advertising which are published separately and are available upon request.

RETURN POLICY: Returns will not be accepted unless pre-authorized by Aderans Hair Goods (AHG). Requests must be made within 30 days from receipt of goods. Upon approval and receipt of the authorization for return label, merchandise meeting the following conditions may be returned for an exchange or direct credit to your account (freight

prepaid by customer). NO cash refunds! If an item is to be exchanged, new shipping and handling charges will be added.

1. A copy of your invoice must accompany all returns. The authorization for return label must be placed on the outside of the box (complete with the authorization number) and your return address. If not, the box will be refused.
2. Returned merchandise must be in MINT CONDITION. Mint condition is defined by AHG as: no missing tags or labels, the hair net is not removed, item(s) are not combed/fluffed or tried on by a customer. All returns must be in original shipping box. There is a restocking fee of \$10.00 for EACH piece returned.
3. AHG has carefully designed its product packaging to protect the product integrity. AHG is not responsible for damage to or problems with any product where the product and/or shipment packaging has been changed by customer request. No returns will be accepted under these conditions.
4. Shipping and handling fees are non-refundable.
5. Any DISCONTINUED items are not returnable.
6. AHG is not responsible for lost return packages.

It is recommended that you keep proper Proof-of-Delivery. Merchandise not meeting the above stipulations will be refused. AHG will not accept returns more than 30 days after receipt of goods. If there is a factory defect or an incorrectly shipped item due to our error, a full exchange or credit will be applied directly to your account. Note: If an item is returned for a "defective" credit and upon examination found not to be defective, credit will only be given for the item's original price (providing it still meets the above standards), and a \$10.00 restocking charge will be applied. Any additional product not authorized for return will be sent back.

Note: Colors shown in this catalog may not reflect actual color of product.

RENÉ OF PARIS®
2014 HI-FASHION COLLECTION

DIVISION OF ADERANS HAIR GOODS, INC.

9100 WILSHIRE BLVD.
EAST TOWER 9TH FLOOR
BEVERLY HILLS, CA 90212

TOLL FREE: 800.353.7363
FAX: 424.239.1424

info@reneofparis.com
www.reneofparis.com

ROP HI-FASHION CATALOG 2014



2103554